

## MX-5 Meter and Enclosure

### Introduction

The new MX-5 is the latest design in metal enclosures suitable for the IC-5 range of meters. The MX-5-7 is the combination of the IC-5-7 meter fitted into the new enclosure. This range of steel enclosures from Autometers offers the ideal way of installing an electricity meter, ensuring that the meter is protected and enabling a very simple installation. The steel enclosures are manufactured in 1.2mm steel and powder coated in light grey (RAL 7035) to give strong, robust and aesthetically-pleasing appearance.

### Installation

Check that you have the correct parts before starting the installation. *Please see list below.*

1. The correct meter for the application
2. The current Transformers are correct and are the same ratio as the meter
3. The cable harness is long enough
4. The steel enclosure is suitable for the installation

### Installing the Enclosure

Firstly examine the area where the enclosure is to be fitted. Check that the cables will be long enough to reach the meter inside the enclosure and that the metal enclosure is positioned at a sensible height so you can press the keys and read the information easily.

To fix the metal enclosure first remove the cover, then remove the inner bracket which the meter is fitted to this has four retaining screws holding the bracket in place.

To remove the plate just loosen the screws and slide the bracket upwards and remove.

Then holding the enclosure up against the wall mark out the three fixing positions on the wall and take note of where you will drill your box for the cables to enter.

Drill your box for the cables and then drill and plug the wall, using appropriate screws secure the box to the wall and refit the inner bracket holding the meter.

Fit the required bush in the cable entry and run your cables to the meter. There is a connection diagram fitted into the box and there is another with the IC-5 installation manual ensure you take time to study the diagram. Connecting the meter and current transformers can be made easier by using Autometers Cable harness which can be purchased with the enclosure, the cable harness is colour coded and each cable individually numbered. Current transformers purchased from Autometers will also be numbered to match the cable harness. See leaflet enclosed.

Route and form the cables into the enclosure so that the individual cables can enter the meter terminals easily and under no strain.

Always allow a little extra cable where possible to ensure that the cables do not pull on the meter terminals.

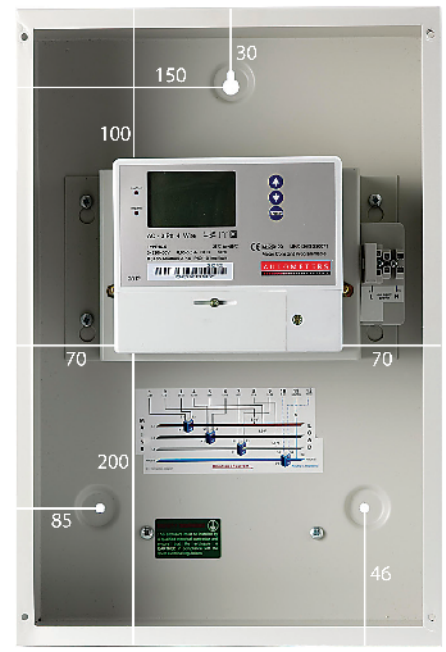
### Earthing the Enclosure

The steel enclosure must be Earthed in accordance with the latest and relevant Electricity Regulations concerning steel enclosures. The enclosure has two possible Earth fixing points which are positioned below the meter. A green Earth label is positioned by one of them. You can use the Earthing point we have built in or install your own, but ensure that you have a good sound connection with your Earth wire to the case.

When connecting the Earth wire, form the cable so that it attaches to the Earthing point without pulling on the connection.

When you have finished installing the enclosure ensure that you do the necessary electrical tests to comply with the latest Electricity Regulations concerning metal enclosures.

**It is essential that the Steel enclosure is correctly Earthed in accordance to the Electricity Regulations.**



300  
depth of unit 130  
all dimensions in millimetres

Outer Metal Case	1.2 mm Steel
Inner Metal Plate	1.2 mm Steel
Finish	RAL 7035 (Light Grey) Powder Coat Texture Finish

Product development is continuous and Autometers Systems Ltd reserves the right to make alterations and manufacture without notice. Products as delivered may vary slightly from the descriptions and illustrations in this publication.