

# SE-P2000 Meter and Enclosure (C.T. operated)

## Introduction

The new SE-P2000 enclosure is the latest design in metal enclosures suitable for the new P2000 range of electricity meters. The new enclosure has been designed with the electrical contractors in mind making it aesthetically pleasing and easy to install with removable top and bottom panels for drilling. The SE-P2000 has now been fitted with a new hasp arrangement enabling a padlock to be fitted to the front for added security.

The P2000-T current transformer operated meter has the added in line fuses and current transformer colour coded shorting block fitted and pre wired to the meter enabling a quick and simple installation where loads are above 100 amp. Autometers supplies colour coded and marked cable harnesses various lengths and also various types of current transformers. See the web [www.autometers.co.uk](http://www.autometers.co.uk) for full details.

The new slimmer and more versatile enclosure is manufactured in 1.2mm steel and is powder-coated in cream semi gloss (Ral 9001) to give strong, robust and aesthetically pleasing appearance.

The SE-P2000 enclosure has been designed for clarity in reading the register and ease of use in operating the scroll button on the front of the meter. All connections are enclosed in the metal box.

## Installing the Enclosure

Examine the area where you intend to fit the enclosure and check that you have all the necessary parts and that the cable is long enough to install and reach the meter terminals.

The metal enclosure has been designed to make installation as simple and as easy as possible with alternative ways to drill the meter box.

1. By removing the four screws at the top and the bottom you can disassemble the enclosure into its parts allowing you to drill the top and bottom plates separately.

### OR

2. By removing the meter from the enclosure and drill the cable entry holes as a complete unit.

## Earthing the Enclosure

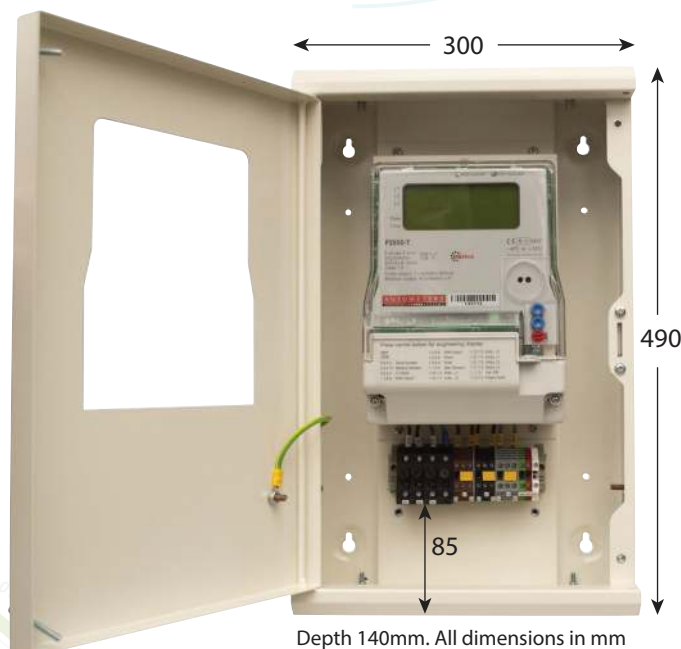
The enclosure must be earthed in accordance to the latest regulations concerning steel enclosures. The enclosure comes with two earth positions with green earth labels attached you can use either of these positions to earth the enclosure, which ever you prefer.

When connecting the earth wire, form the cable and leave a generous length so the cable is not pulling on the terminal.

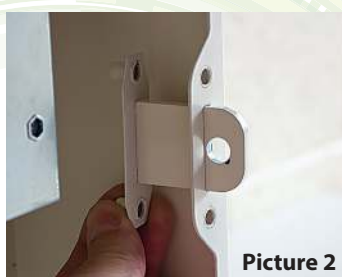
When you have finished the installation do the required electrical tests to comply with the latest electricity regulations concerning installation of meters in metal enclosures.

**It is essential that the steel enclosure is correctly Earthed in accordance to the Electricity Regulations.**

**DO NOT MEGGA TEST THE VOLTAGE OR CURRENT CIRCUITS WITH THE METER CONNECTED**



Picture 1



Picture 2



Picture 3



Picture 4

## Fixing the Lock Bracket

When the enclosure has been installed it will be necessary to remove the lock hasp and reposition it so the hasp protrudes through the front cover. Remove the two screws so the hasp drops down (see picture 1), turn the lock hasp so it protrudes through the slit in the case (picture 2). Secure using the original screws (picture 3). The final lock should look like picture 4.