

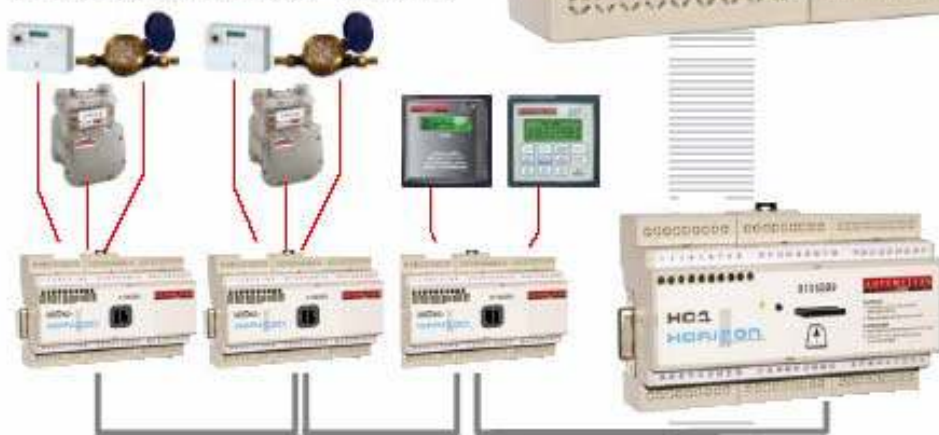
# HCC

The HCC is a din rail mounted data collection devices capable of accepting up to 16 utility meters with Volt free pulse contacts.

The HCC uses CAN BUS technology enabling up to 127 devices to be wired on a single LAN back to a Horizon HC1 device. (See HC1 leaflet for information.)

Inputs can be programmed to a variety of Pulse values and converted into up to 4 Rates for Load analysis.

All logged Data can be extracted directly into excel or alternatively Logged, viewed, or downloaded from a dedicated secure website.



- 16 Volt free Pulse inputs
- Up to 127 Devices on One LAN enabling over 2000 Metered points.
- Multi Rate Register Option
- Direct Access of Logged Data via Microsoft Excel/Access
- Simple Web Monitoring available.



# HORIZON

range

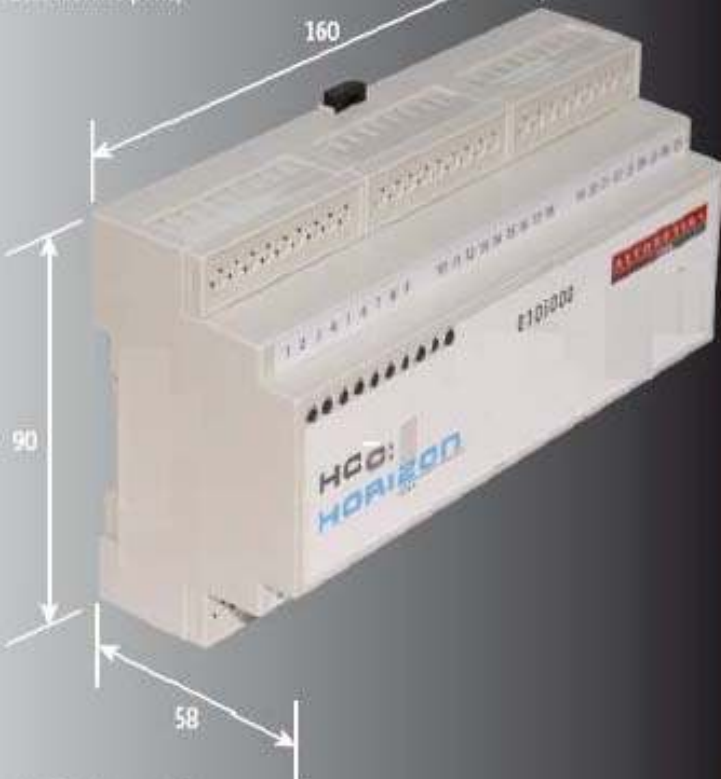
The fusion of land based metering  
and ether based monitoring

# HCC HCC HCC HCC

## Technical Parameters

|                  |  |
|------------------|--|
| Input Terminals  | 16 Sets of +/-Earth (Volt free)  |
| Burden           | Less than 1VA  |
| Auxiliary Burden | Less than 10 VA  |
| Auxiliary Supply | 110 to 230 Volt +/- 10%  |
| Frequency        | 50/60 Hz   |
| Temperatures     | Operating -20°C to +70°C<br>Storage -30°C to +80°C   |
|                  | Humidity 20-90% RH<br>Non Condensing   |
| CAN bus Details  | 2 Wire Bi-Directional Interface<br>Baud Rate : 125K, 250K, 500K<br>and 1 Meg                                   |
| Protocol         | CAN Open protocol  |
| Standards        | EMC Testing for emissions and<br>immunity meets the specified<br>requirements defined in<br>BS EN 61326 : 1997 |
| Material         | Grey UL94-V0<br>Flame Retardant Lexan  |
| Mounting         | 35mm DIN Rail ( 9 Module Case)   |

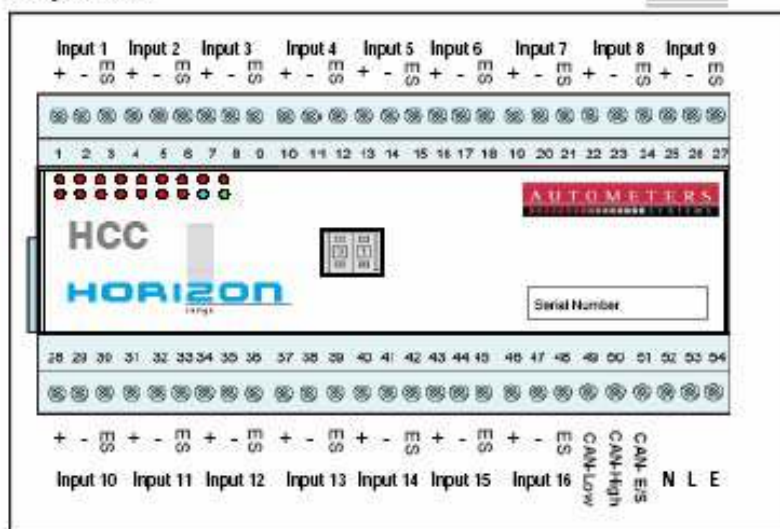
Dimensions (mm)



Electrical Connections

It is important to use the correct type of cable when connection from pulse meters to the HCC Collector.  
Use Belden 8723 or Equal

## Wiring information



# HORIZON

range

**AUTOMETERS**  
PULSEDATA SYSTEMS

**Autometers Systems Ltd**  
4B Albany Road, Chorlton-cum-Hardy,  
Manchester M21 0AW  
Tel: 0161 861 9056 Fax: 0161 881 3745  
Email: sales@autometers.co.uk  
www.autometers.co.uk

The fusion of land based metering  
and other based monitoring