

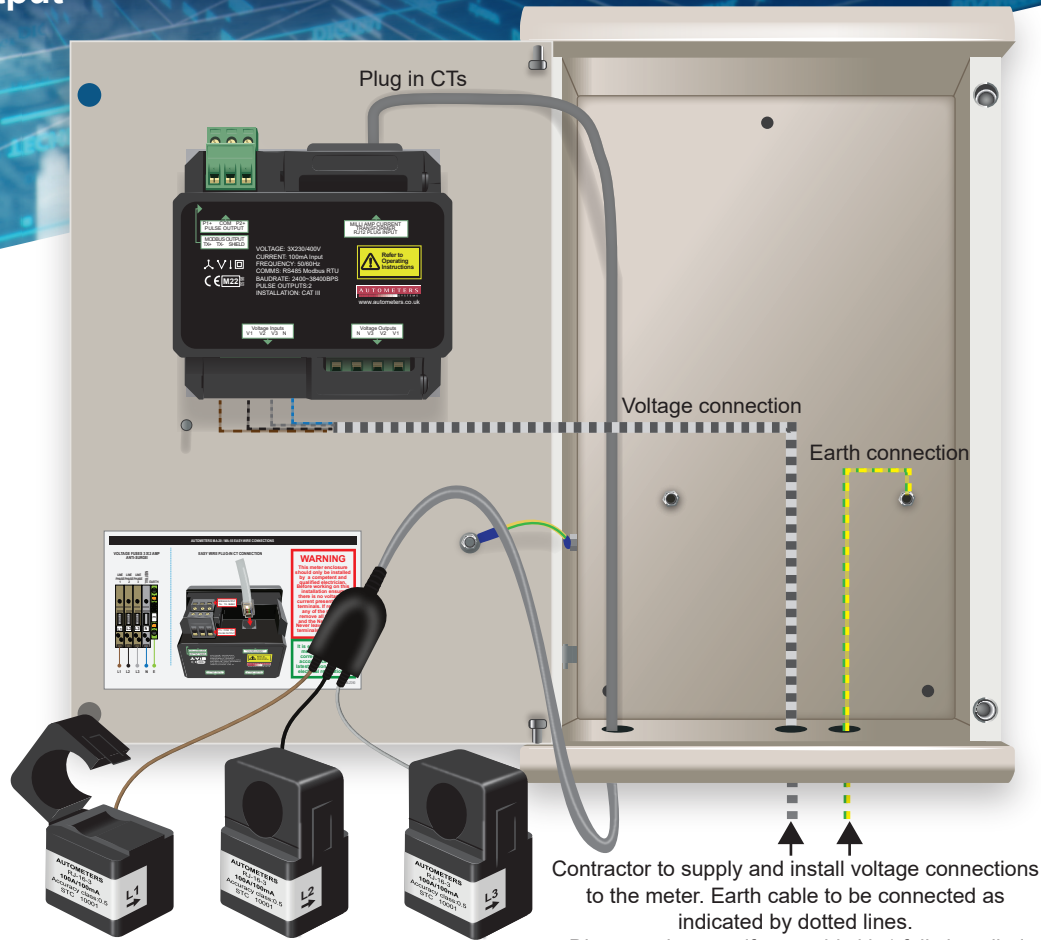
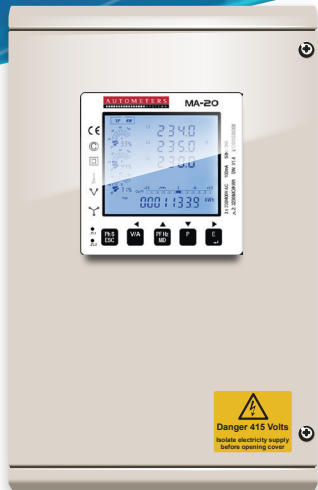
SA-UE-1-MA-20

SELF ASSEMBLY EASY-WIRE PANEL METER KIT

AUTOMETERS
SYSTEMS

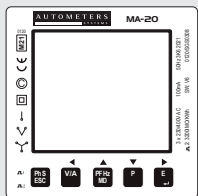
- MID approved, appendix "B" & "D"
- MA-20 1-4 channel input (4 meters in 1).
- Easy-wire plug-in CT & Modbus connections
- RS485 Modbus output
- Pulse output

HORIZON
Energy Monitoring and Invoicing

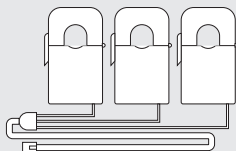


SA-UE-1-MA-20 Kit 1 Components

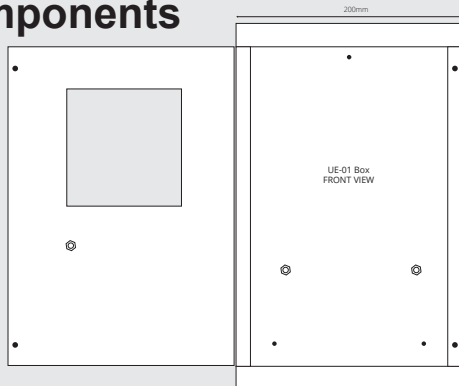
(items not shown to scale)



MA-20 Meter



Plug-in CTs



UE-1 Metal Enclosure

UE-1 dimensions

Height = 325mm
Width = 200mm
Depth = 100mm



Visit autometers.co.uk to find out more
or call on 0161 861 9056 to speak to our team

Autometers Systems Ltd.
Unit 15c
Raleigh Hall Industrial Estate
Eccleshall, Stafford ST21 6JL
Email: sales@autometers.co.uk
Phone: 00(44) 0161 861 9056
www.autometers.co.uk

AUTOMETERS
SYSTEMS

SA-UE-1-MA-20

SELF ASSEMBLY EASY-WIRE PANEL METER KIT

AUTOMETERS
SYSTEMS

- MID approved, appendix "B" & "D"
- MA-20 1-4 channel input (4 meters in 1).
- Easy-wire plug-in CT & Modbus connections
- RS485 Modbus output
- Pulse output

HORIZON
Energy Monitoring and Invoicing

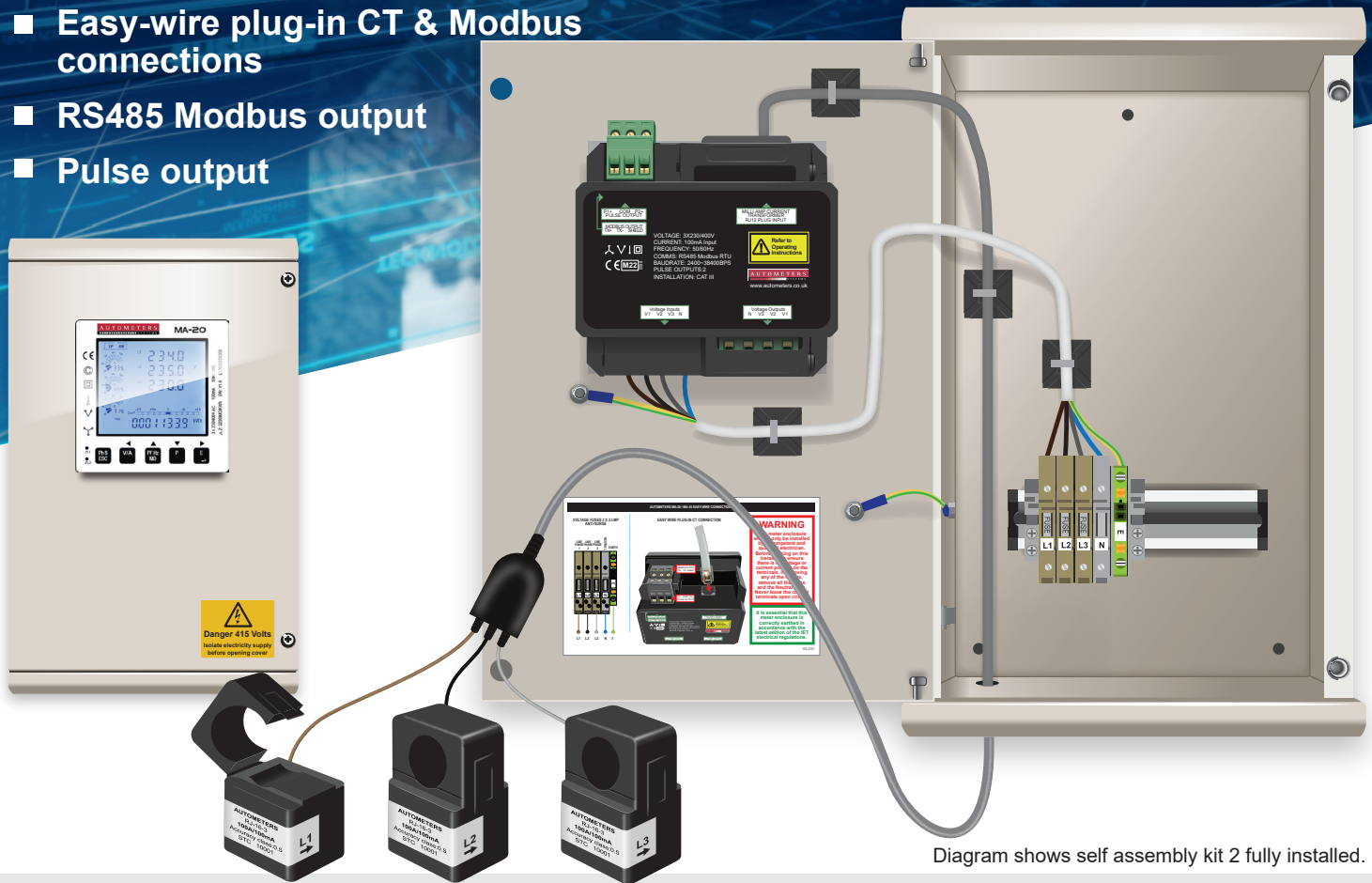
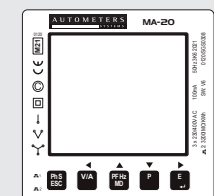
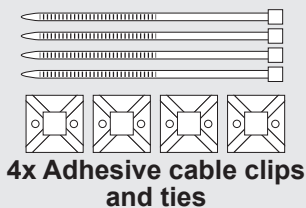


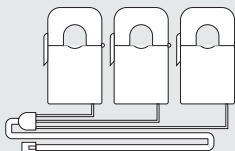
Diagram shows self assembly kit 2 fully installed.

SA-UE-1-MA-20 Kit 2 Components

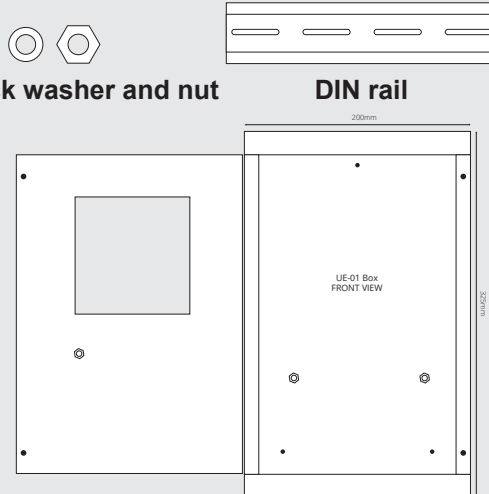
(items not shown to scale)



MA-20 Meter



Plug-in CTs



UE-1 Metal Enclosure

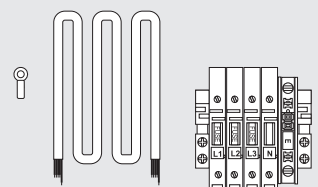


Earth lock washer and nut

DIN rail



2x DIN rail screws



Cable harness, voltage terminals and earth connection



Visit autometers.co.uk to find out more
or call on 0161 861 9056 to speak to our team

Autometers Systems Ltd.
Unit 15c
Raleigh Hall Industrial Estate
Eccleshall, Stafford ST21 6JL
Email: sales@autometers.co.uk
Phone: 00(44) 0161 861 9056
www.autometers.co.uk

AUTOMETERS
SYSTEMS