

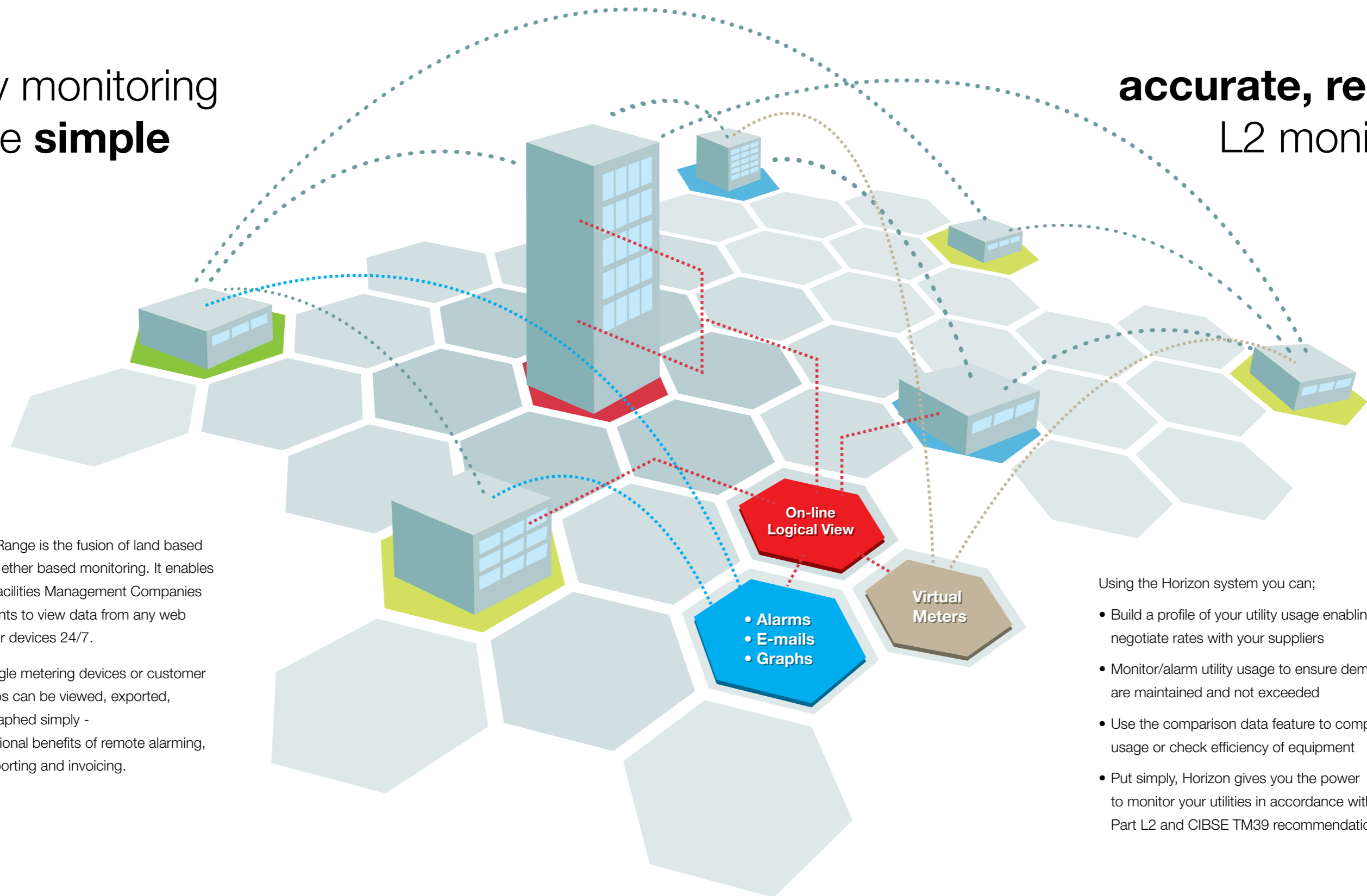
HORIZON giving you total control

utility monitoring
made **simple**

accurate, reliable
L2 monitoring

The Horizon Range is the fusion of land based metering and ether based monitoring. It enables End Users, Facilities Management Companies and Consultants to view data from any web enabled PC or devices 24/7.

Data from single metering devices or customer defined groups can be viewed, exported, emailed or graphed simply - with the additional benefits of remote alarming, automatic reporting and invoicing.



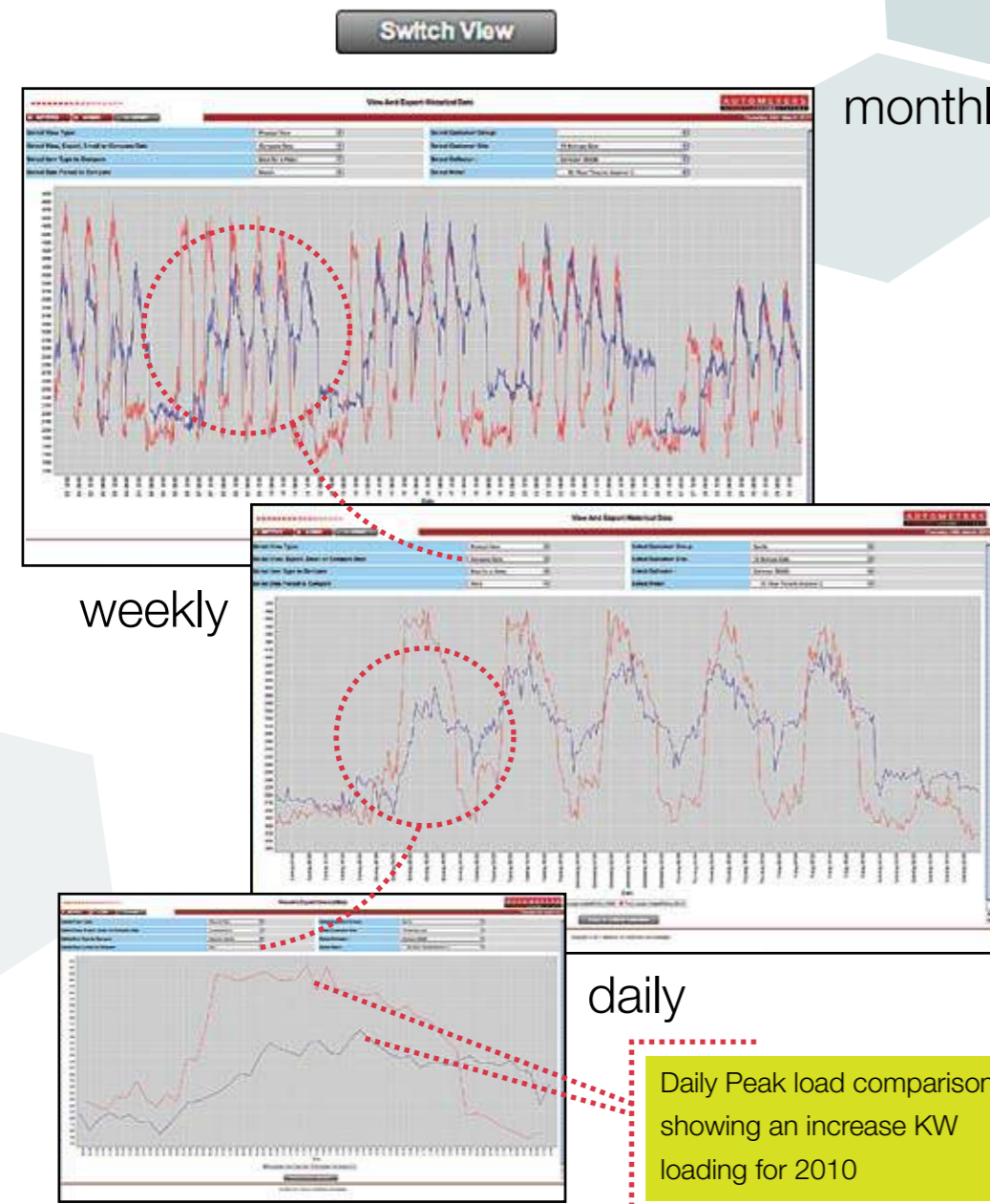
Using the Horizon system you can;

- Build a profile of your utility usage enabling you to negotiate rates with your suppliers
- Monitor/alarm utility usage to ensure demand levels are maintained and not exceeded
- Use the comparison data feature to compare usage or check efficiency of equipment
- Put simply, Horizon gives you the power to monitor your utilities in accordance with Part L2 and CIBSE TM39 recommendations

comparison of data

With the ever increasing cost of energy, having the ability to compare data is imperative. Horizon enables information from any meter to be compared on a daily, weekly, monthly or yearly basis. Data can be used for efficiency monitoring or simply to monitor the effect climatic conditions have on the energy usage.

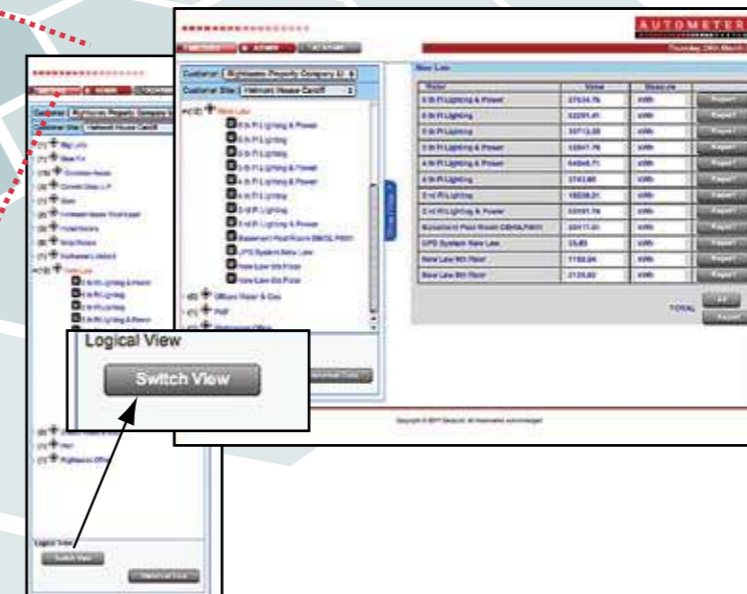
Below are three graphs comparing the month of December for 2009 and 2010. The initial graph shows the full month with the highlighted circled areas showing the expansion possibilities from weekly to daily comparison for more detailed analysis.



simple logical displaying of information

Information is only useful if it can be used! Horizons "logical" view enables meters to be collated to suit either cost centres, load type or user definable groups. Modbus and Pulse Meters can be grouped together to enable whole group or specific meter monitoring.

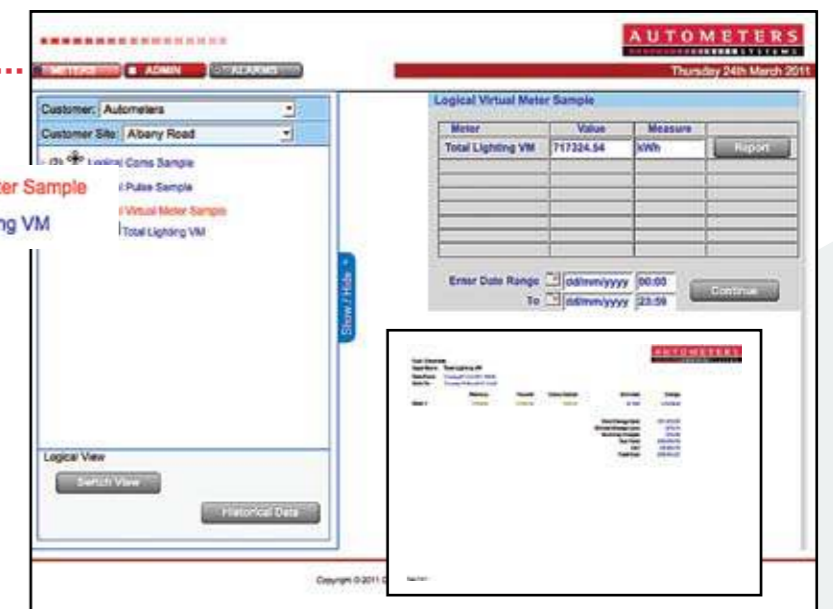
From these groups both manual and automated reporting can be set. Invoices can be printed and overall group costs can be reported in simple user friendly PDF format.



virtual meters

Virtual meters can be created from actual meters in the form of either summated or net calculations. This can be done for both Modbus and Pulse Meters, once created these meters can then be viewed in the logical view and operate, log and export data as if they were actual devices. These are especially useful when total loads are required to be known for either utilities or individual clients etc.

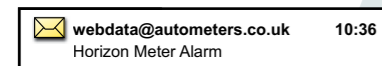
For example, a virtual meter could be created for total lighting. This would enable all lighting meters to be summated to give simple total lighting usage and cost analysis



reporting alarms

Knowledge is important!

Knowing that you are near to critical levels or when you have lost supplies in today's busy environment is imperative. Horizon offers remote email or on screen alarming for all critical data.



CRC – Carbon Reduction Commitment

The CRC came into force in April 2010 and aims to significantly reduce UK carbon emissions not covered by other pieces of legislation. The primary focus is to reduce emissions in non-energy intensive sectors and as such has become an everyday concern of building managers. Whether your utility supply is kWh mains electricity, natural gas or litres of diesel on mobile generators, Horizon can log the CO₂ and enable tabulated or graphical information to be viewed at the click of a mouse.

excess alarms

failure or low level alarms

Main Incomer Meter Alarm Setup

High (Over) Alarm Settings		Low (Under) Alarm Settings	
L1 Amps:	A	L1 Amps: 0.00	A
L2 Amps:	A	L2 Amps: 0.00	A
L3 Amps:	A	L3 Amps: 0.00	A
T Amps:	A	T Amps:	A
L1 Volts:	V	L1 Volts:	V
L2 Volts:	V	L2 Volts:	V
L3 Volts:	V	L3 Volts:	V
L1 KW:	KW	L1 KW:	KW
L2 KW:	KW	L2 KW:	KW
L3 KW:	KW	L3 KW:	KW
T KW:	KW	T KW:	KW
L1 KVA:	KVA	L1 KVA:	KVA
L2 KVA:	KVA	L2 KVA:	KVA
L3 KVA:	KVA	L3 KVA:	KVA
T KVA:	KVA	T KVA:	KVA
Profile Usage:	kWh	Profile Usage:	kWh
Non Usage Alarm (kWh): <input type="checkbox"/>			

UPDATE MAIN

highlighted alarmed values

Main Incomer Meter Alarm Setup

High (Over) Alarm Settings		Low (Under) Alarm Settings	
L1 Amps:	10.00 A	L1 Amps: 0.00	A
L2 Amps:	A	L2 Amps: 0.00	A
L3 Amps:	A	L3 Amps: 25.00	A
T Amps:	A	T Amps:	A

screen "pop" to notify



View Historical Alarms

Customer: Autometers
Customer site: Albany Road
Alarm Date Tripped Between: 01/01/2010 and 24/03/2011
Select Collector: HCl Master Collector 106081
Select Meters or Pulses: Meters
Search For Alarms Under: All Meters Under Selected Collector

Meter Name	Modbus Description	Alarm Type	Date Alarm Tripped	Date Alarm Reset
Main Incomer	L1 Amp	Over Usage	18/01/2010 12:26:53	18/01/2010 12:30:32
Main Incomer	L3 Amp	Over Usage	18/01/2010 12:26:53	18/01/2010 12:30:32
Main Incomer	L2 Amp	Over Usage	18/01/2010 12:26:53	18/01/2010 12:30:32
Main Incomer	L3 Amp	Under Usage	05/08/2010 09:36:52	05/08/2010 10:21:09

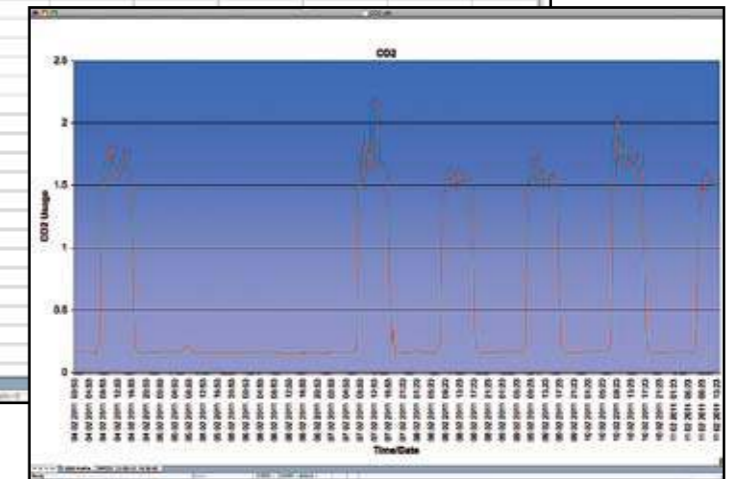
Historical alarms are stored showing the time the alarm was activated **and** the time it was reset.

On-line Logical View

- Alarms
- E-mails
- Graphs

Date	CO2
04 02 2011 00:53	0.17
04 02 2011 01:23	0.17
04 02 2011 01:53	0.17
04 02 2011 02:23	0.17
04 02 2011 02:53	0.16
04 02 2011 03:23	0.15
04 02 2011 03:53	0.17
04 02 2011 04:23	0.16
04 02 2011 04:53	0.17
04 02 2011 05:23	0.16
04 02 2011 05:53	0.16
04 02 2011 06:23	0.17
04 02 2011 06:53	0.15
04 02 2011 07:23	0.22
04 02 2011 07:53	0.24
04 02 2011 08:23	1.2
04 02 2011 08:53	1.41
04 02 2011 09:23	1.56
04 02 2011 09:53	1.65
04 02 2011 10:23	1.77
04 02 2011 10:53	1.68
04 02 2011 11:23	1.79
04 02 2011 11:53	1.84
04 02 2011 12:23	1.55
04 02 2011 12:53	1.56
04 02 2011 13:23	1.61
04 02 2011 13:53	1.63
04 02 2011 14:23	1.73

30 minute CO₂ profile



non usage alarms

Available for both Pulse and Modbus Meters the kWh non usage ensures that an alarm is raised in the event that no kWh have been consumed on a pre determined log interval. This is extremely useful for client monitoring or for domestic applications.

reduction can only start with knowledge of use . . . **tick that box**

"Participants in the CRC will need to measure and report their carbon emissions annually,"

Whether you are a single building company or a multi location, multinational conglomerate, Horizon enables individual meter, total site and overall group monitoring, logging and reporting of CO₂ consumption.

